

*Luxury Diamond Jewellery*  
Monsoon 2024 Collection



ARHAM JEWEL





Serial Number - PS-1947

## Details

| Overall Diamond Details |              |
|-------------------------|--------------|
| Shape                   | Round        |
| Total Number            | 36 diamonds  |
| Total Weight            | 0.520 carats |

| Metal Details |             |
|---------------|-------------|
| Purity        | 18K         |
| Weight        | 5.260 grams |

| Breakup - Pendant |             |
|-------------------|-------------|
| Number            | 12 diamonds |
| Weight            | 0.260 carat |

| Breakup - Earrings |             |
|--------------------|-------------|
| Number per earring | 12 diamonds |
| Weight per earring | 0.130 carat |



Serial Number - PS-2573

## Details

| Overall Diamond Details |              |
|-------------------------|--------------|
| Shape                   | Round        |
| Total Number            | 37 diamonds  |
| Total Weight            | 0.260 carats |

| Metal Details |             |
|---------------|-------------|
| Purity        | 18K         |
| Weight        | 2.890 grams |

| Breakup - Pendant |             |
|-------------------|-------------|
| Number            | 11 diamonds |
| Weight            | 0.100 carat |

| Breakup - Earrings |             |
|--------------------|-------------|
| Number per earring | 9 diamonds  |
| Weight per earring | 0.080 carat |



## Details

| Overall Diamond Details |              |
|-------------------------|--------------|
| Shape                   | Round        |
| Total Number            | 94 diamonds  |
| Total Weight            | 4.260 carats |

| Metal Details |             |
|---------------|-------------|
| Purity        | 18K         |
| Weight        | 5.740 grams |

| Breakup - Pendant |             |
|-------------------|-------------|
| Number            | 46 diamonds |
| Weight            | 2.170 carat |

| Breakup - Earrings |             |
|--------------------|-------------|
| Number per earring | 24 diamonds |
| Weight per earring | 1.045 carat |



Serial Number - BD09005

## Details

| Overall Diamond Details |              |
|-------------------------|--------------|
| Shape                   | Round        |
| Total Number            | 67 diamonds  |
| Total Weight            | 0.620 carats |

| Metal Details |             |
|---------------|-------------|
| Purity        | 18K         |
| Weight        | 6.180 grams |

| Breakup - Pendant |             |
|-------------------|-------------|
| Number            | 41 diamonds |
| Weight            | 0.460 carat |

| Breakup - Earrings |             |
|--------------------|-------------|
| Number per earring | 13 diamonds |
| Weight per earring | 0.080 carat |



Serial Number - FLP-15182

## Details

| Overall Diamond Details |              |
|-------------------------|--------------|
| Shape                   | Round        |
| Total Number            | 67 diamonds  |
| Total Weight            | 0.620 carats |

| Metal Details |             |
|---------------|-------------|
| Purity        | 18K         |
| Weight        | 6.180 grams |

| Breakup - Pendant |             |
|-------------------|-------------|
| Number            | 41 diamonds |
| Weight            | 0.460 carat |

| Breakup - Earrings |             |
|--------------------|-------------|
| Number per earring | 13 diamonds |
| Weight per earring | 0.080 carat |







Serial Number - LR-Q10709

| Overall Diamond Details |              |
|-------------------------|--------------|
| Shape                   | Round        |
| Total Weight            | 0.370 carats |

| Metal Details |             |
|---------------|-------------|
| Purity        | 18K         |
| Total Weight  | 2.200 grams |



Serial Number - LR-Q13802

| Overall Diamond Details |              |
|-------------------------|--------------|
| Shape                   | Round        |
| Total Weight            | 0.410 carats |

| Metal Details |             |
|---------------|-------------|
| Purity        | 18K         |
| Total Weight  | 2.360 grams |



Serial Number - A144233

| Overall Diamond Details |              |
|-------------------------|--------------|
| Shape                   | Round        |
| Total Weight            | 0.280 carats |

| Metal Details |             |
|---------------|-------------|
| Purity        | 18K         |
| Total Weight  | 2.500 grams |



Serial Number - A14108



Serial Number - A15007\_01



Serial Number - LR-Q144156

| Overall Diamond Details |              |
|-------------------------|--------------|
| Shape                   | Round        |
| Total Weight            | 0.350 carats |

| Metal Details |            |
|---------------|------------|
| Purity        | 18K        |
| Total Weight  | 3.380grams |



Serial Number - ULR-13213

| Overall Diamond Details |             |
|-------------------------|-------------|
| Shape                   | Round       |
| Total Weight            | 0.12 carats |

| Metal Details |             |
|---------------|-------------|
| Purity        | 18K         |
| Total Weight  | 0.930 grams |



Serial Number - LR-Q144278

| Overall Diamond Details |              |
|-------------------------|--------------|
| Shape                   | Round        |
| Total Weight            | 0.200 carats |

| Metal Details |             |
|---------------|-------------|
| Purity        | 18K         |
| Total Weight  | 2.000 grams |



Serial Number - LR-405

| Overall Diamond Details |              |
|-------------------------|--------------|
| Shape                   | Round        |
| Total Weight            | 0.570 carats |

| Metal Details |             |
|---------------|-------------|
| Purity        | 18K         |
| Total Weight  | 4.110 grams |



Serial Number - LR-794

| Overall Diamond Details |              |
|-------------------------|--------------|
| Shape                   | Round        |
| Total Weight            | 0.290 carats |

| Metal Details |             |
|---------------|-------------|
| Purity        | 18K         |
| Total Weight  | 3.300 grams |



Serial Number - LR-1491

| Overall Diamond Details |              |
|-------------------------|--------------|
| Shape                   | Round        |
| Total Weight            | 0.990 carats |

| Metal Details |             |
|---------------|-------------|
| Purity        | 18K         |
| Total Weight  | 4.160 grams |



Serial Number - LR-A20068

| Overall Diamond Details |              |
|-------------------------|--------------|
| Shape                   | Round        |
| Total Weight            | 0.290 carats |

| Metal Details |             |
|---------------|-------------|
| Purity        | 18K         |
| Total Weight  | 2.440 grams |



Serial Number - LR-A20188

| Overall Diamond Details |              |
|-------------------------|--------------|
| Shape                   | Round        |
| Total Weight            | 0.290 carats |

| Metal Details |             |
|---------------|-------------|
| Purity        | 18K         |
| Total Weight  | 2.140 grams |



Serial Number - LR-53968

| Overall Diamond Details |              |
|-------------------------|--------------|
| Shape                   | Round        |
| Total Weight            | 0.530 carats |

| Metal Details |             |
|---------------|-------------|
| Purity        | 18K         |
| Total Weight  | 3.100 grams |



Serial Number - ULR-52432

| Overall Diamond Details |              |
|-------------------------|--------------|
| Shape                   | Round        |
| Total Weight            | 0.200 carats |

| Metal Details |             |
|---------------|-------------|
| Purity        | 18K         |
| Total Weight  | 1.760 grams |



Serial Number - ULR-20192

| Overall Diamond Details |             |
|-------------------------|-------------|
| Shape                   | Round       |
| Total Weight            | 0.19 carats |

| Metal Details |             |
|---------------|-------------|
| Purity        | 18K         |
| Total Weight  | 1.500 grams |



Serial Number - LR-BQ12036

| Overall Diamond Details |              |
|-------------------------|--------------|
| Shape                   | Round        |
| Total Weight            | 0.290 carats |

| Metal Details |             |
|---------------|-------------|
| Purity        | 18K         |
| Total Weight  | 2.270 grams |



Serial Number - LR-1163

| Overall Diamond Details |              |
|-------------------------|--------------|
| Shape                   | Round        |
| Total Weight            | 0.540 carats |

| Metal Details |             |
|---------------|-------------|
| Purity        | 18K         |
| Total Weight  | 4.810 grams |



# ARHAM JEWEL



Serial Number - LR-1987

| Overall Diamond Details |              |
|-------------------------|--------------|
| Shape                   | Round        |
| Total Weight            | 0.690 carats |

| Metal Details |             |
|---------------|-------------|
| Purity        | 18K         |
| Total Weight  | 8.510 grams |



Serial Number - LR-2067

| Overall Diamond Details |              |
|-------------------------|--------------|
| Shape                   | Round        |
| Total Weight            | 0.770 carats |

| Metal Details |             |
|---------------|-------------|
| Purity        | 18K         |
| Total Weight  | 7.630 grams |



Serial Number - LR-1164

| Overall Diamond Details |              |
|-------------------------|--------------|
| Shape                   | Round        |
| Total Weight            | 0.680 carats |

| Metal Details |             |
|---------------|-------------|
| Purity        | 18K         |
| Total Weight  | 5.130 grams |



Serial Number - LR-2481A

| Overall Diamond Details |              |
|-------------------------|--------------|
| Shape                   | Round        |
| Total Weight            | 0.440 carats |

| Metal Details |             |
|---------------|-------------|
| Purity        | 18K         |
| Total Weight  | 3.150 grams |



Serial Number - LR-2499

| Overall Diamond Details |              |
|-------------------------|--------------|
| Shape                   | Round        |
| Total Weight            | 0.270 carats |

| Metal Details |             |
|---------------|-------------|
| Purity        | 18K         |
| Total Weight  | 4.220 grams |



Serial Number - LR-2487

| Overall Diamond Details |              |
|-------------------------|--------------|
| Shape                   | Round        |
| Total Weight            | 0.280 carats |

| Metal Details |             |
|---------------|-------------|
| Purity        | 18K         |
| Total Weight  | 4.600 grams |





Serial Number - FLR-9322

| Overall Diamond Details |              |
|-------------------------|--------------|
| Shape                   | Round        |
| MOP                     | 0.100 carats |
| Diamond                 | 0.250 carats |

| Metal Details |             |
|---------------|-------------|
| Purity        | 18K         |
| Total Weight  | 2.360 grams |



Serial Number - FLR-3349

| Overall Diamond Details |              |
|-------------------------|--------------|
| Shape                   | Round        |
| MOP                     | 2.050 carats |
| Diamond                 | 0.670 carats |

| Metal Details |             |
|---------------|-------------|
| Purity        | 18K         |
| Total Weight  | 7.530 grams |



Serial Number - LR-2601

| Overall Diamond Details |              |
|-------------------------|--------------|
| Shape                   | Round        |
| SYT Green               | 0.430 carats |
| Diamond                 | 0.740 carats |

| Metal Details |             |
|---------------|-------------|
| Purity        | 18K         |
| Total Weight  | 3.880 grams |



Serial Number - ULR-6161

| Overall Diamond Details |              |
|-------------------------|--------------|
| Shape                   | Round        |
| Total Weight            | 0.290 carats |

| Metal Details |             |
|---------------|-------------|
| Purity        | 18K         |
| Total Weight  | 2.300 grams |



Serial Number - LR-6390

| Overall Diamond Details |              |
|-------------------------|--------------|
| Shape                   | Round        |
| Total Weight            | 0.160 carats |

| Metal Details |             |
|---------------|-------------|
| Purity        | 18K         |
| Total Weight  | 1.920 grams |



Serial Number - LR-6451

| Overall Diamond Details |              |
|-------------------------|--------------|
| Shape                   | Round        |
| Total Weight            | 0.170 carats |

| Metal Details |             |
|---------------|-------------|
| Purity        | 18K         |
| Total Weight  | 2.370 grams |



Serial Number - ULR-9105

| Overall Diamond Details |              |
|-------------------------|--------------|
| Shape                   | Round        |
| Total Weight            | 0.080 carats |

| Metal Details |             |
|---------------|-------------|
| Purity        | 18K         |
| Total Weight  | 1.140 grams |



Serial Number - ULR-9069

| Overall Diamond Details |              |
|-------------------------|--------------|
| Shape                   | Round        |
| Total Weight            | 0.090 carats |

| Metal Details |             |
|---------------|-------------|
| Purity        | 18K         |
| Total Weight  | 0.900 grams |



Serial Number - ULR-9060

| Overall Diamond Details |              |
|-------------------------|--------------|
| Shape                   | Round        |
| Total Weight            | 0.090 carats |

| Metal Details |             |
|---------------|-------------|
| Purity        | 18K         |
| Total Weight  | 0.980 grams |



Serial Number - ULR-9253

| Overall Diamond Details |              |
|-------------------------|--------------|
| Shape                   | Round        |
| Total Weight            | 0.160 carats |

| Metal Details |             |
|---------------|-------------|
| Purity        | 18K         |
| Total Weight  | 1.420 grams |



Serial Number - ULR-9207

| Overall Diamond Details |              |
|-------------------------|--------------|
| Shape                   | Round        |
| Total Weight            | 0.090 carats |

| Metal Details |             |
|---------------|-------------|
| Purity        | 18K         |
| Total Weight  | 0.900 grams |



Serial Number - ULR-9205

| Overall Diamond Details |              |
|-------------------------|--------------|
| Shape                   | Round        |
| Total Weight            | 0.100 carats |

| Metal Details |             |
|---------------|-------------|
| Purity        | 18K         |
| Total Weight  | 0.900 grams |



Serial Number - ULR-9054

| Overall Diamond Details |              |
|-------------------------|--------------|
| Shape                   | Round        |
| Total Weight            | 0.070 carats |

| Metal Details |             |
|---------------|-------------|
| Purity        | 18K         |
| Total Weight  | 0.970 grams |



Serial Number - ULR-9063

| Overall Diamond Details |              |
|-------------------------|--------------|
| Shape                   | Round        |
| Total Weight            | 0.100 carats |

| Metal Details |             |
|---------------|-------------|
| Purity        | 18K         |
| Total Weight  | 0.840 grams |



Serial Number - LR-8800

| Overall Diamond Details |              |
|-------------------------|--------------|
| Shape                   | Round        |
| Total Weight            | 0.320 carats |

| Metal Details |             |
|---------------|-------------|
| Purity        | 18K         |
| Total Weight  | 2.200 grams |



Serial Number - LR-8550

| Overall Diamond Details |              |
|-------------------------|--------------|
| Shape                   | Round        |
| Total Weight            | 0.370 carats |

| Metal Details |             |
|---------------|-------------|
| Purity        | 18K         |
| Total Weight  | 3.430 grams |



Serial Number - ULR-9547

| Overall Diamond Details |              |
|-------------------------|--------------|
| Shape                   | Round        |
| Total Weight            | 0.090 carats |

| Metal Details |             |
|---------------|-------------|
| Purity        | 18K         |
| Total Weight  | 0.860 grams |



Serial Number - LR-1020

| Overall Diamond Details |              |
|-------------------------|--------------|
| Shape                   | Round        |
| Total Weight            | 0.660 carats |

| Metal Details |             |
|---------------|-------------|
| Purity        | 18K         |
| Total Weight  | 5.670 grams |



Serial Number - LLR-6849

| Overall Diamond Details |              |
|-------------------------|--------------|
| Shape                   | Round        |
| Total Weight            | 0.100 carats |

| Metal Details |             |
|---------------|-------------|
| Purity        | 18K         |
| Total Weight  | 1.470 grams |



Serial Number - ULR-11355

| Overall Diamond Details |              |
|-------------------------|--------------|
| Shape                   | Round        |
| Total Weight            | 0.110 carats |

| Metal Details |             |
|---------------|-------------|
| Purity        | 18K         |
| Total Weight  | 1.590 grams |



Serial Number - ULR-6844

| Overall Diamond Details |              |
|-------------------------|--------------|
| Shape                   | Round        |
| Total Weight            | 0.090 carats |

| Metal Details |             |
|---------------|-------------|
| Purity        | 18K         |
| Total Weight  | 1.420 grams |



Serial Number - ULR-9391

| Overall Diamond Details |              |
|-------------------------|--------------|
| Shape                   | Round        |
| Total Weight            | 0.110 carats |

| Metal Details |             |
|---------------|-------------|
| Purity        | 18K         |
| Total Weight  | 1.000 grams |



Serial Number - ULR-9269

| Overall Diamond Details |              |
|-------------------------|--------------|
| Shape                   | Round        |
| Total Weight            | 0.080 carats |

| Metal Details |             |
|---------------|-------------|
| Purity        | 18K         |
| Total Weight  | 0.960 grams |



Serial Number - ULR-9263

| Overall Diamond Details |              |
|-------------------------|--------------|
| Shape                   | Round        |
| Total Weight            | 0.060 carats |

| Metal Details |             |
|---------------|-------------|
| Purity        | 18K         |
| Total Weight  | 0.900 grams |





Serial Number - LR-6521

| Overall Diamond Details |             |
|-------------------------|-------------|
| Shape                   | Round       |
| Total Weight            | 0.140carats |

| Metal Details |             |
|---------------|-------------|
| Purity        | 18K         |
| Total Weight  | 1.950 grams |



Serial Number - LR-6515

| Overall Diamond Details |              |
|-------------------------|--------------|
| Shape                   | Round        |
| Total Weight            | 0.150 carats |

| Metal Details |             |
|---------------|-------------|
| Purity        | 18K         |
| Total Weight  | 2.580 grams |



Serial Number - ULR-6456

| Overall Diamond Details |              |
|-------------------------|--------------|
| Shape                   | Round        |
| Total Weight            | 0.160 carats |

| Metal Details |             |
|---------------|-------------|
| Purity        | 18K         |
| Total Weight  | 1.870 grams |



Serial Number - LR-6672

| Overall Diamond Details |              |
|-------------------------|--------------|
| Shape                   | Round        |
| Total Weight            | 0.120 carats |

| Metal Details |             |
|---------------|-------------|
| Purity        | 18K         |
| Total Weight  | 2.150 grams |



Serial Number - ULR-6671

| Overall Diamond Details |              |
|-------------------------|--------------|
| Shape                   | Round        |
| Total Weight            | 0.130 carats |

| Metal Details |             |
|---------------|-------------|
| Purity        | 18K         |
| Total Weight  | 1.650 grams |



Serial Number - LR-6624

| Overall Diamond Details |              |
|-------------------------|--------------|
| Shape                   | Round        |
| Total Weight            | 0.120 carats |

| Metal Details |             |
|---------------|-------------|
| Purity        | 18K         |
| Total Weight  | 1.900 grams |



Serial Number - ULR-6824A

| Overall Diamond Details |              |
|-------------------------|--------------|
| Shape                   | Round        |
| Total Weight            | 0.080 carats |

| Metal Details |             |
|---------------|-------------|
| Purity        | 18K         |
| Total Weight  | 1.310 grams |



Serial Number - LLR-6820

| Overall Diamond Details |              |
|-------------------------|--------------|
| Shape                   | Round        |
| Total Weight            | 0.090 carats |

| Metal Details |             |
|---------------|-------------|
| Purity        | 18K         |
| Total Weight  | 1.570 grams |



Serial Number - LLR-6674

| Overall Diamond Details |              |
|-------------------------|--------------|
| Shape                   | Round        |
| Total Weight            | 0.140 carats |

| Metal Details |             |
|---------------|-------------|
| Purity        | 18K         |
| Total Weight  | 1.160 grams |



Serial Number - ULR-6905

| Overall Diamond Details |              |
|-------------------------|--------------|
| Shape                   | Round        |
| Total Weight            | 0.090 carats |

| Metal Details |             |
|---------------|-------------|
| Purity        | 18K         |
| Total Weight  | 1.150 grams |



Serial Number - LLR-9247

| Overall Diamond Details |              |
|-------------------------|--------------|
| Shape                   | Round        |
| Total Weight            | 0.120 carats |

| Metal Details |             |
|---------------|-------------|
| Purity        | 18K         |
| Total Weight  | 1.150 grams |



Serial Number - ULR-9550

| Overall Diamond Details |              |
|-------------------------|--------------|
| Shape                   | Round        |
| Total Weight            | 0.080 carats |

| Metal Details |             |
|---------------|-------------|
| Purity        | 18K         |
| Total Weight  | 1.300 grams |



Serial Number - ULR-6904

| Overall Diamond Details |              |
|-------------------------|--------------|
| Shape                   | Round        |
| Total Weight            | 0.090 carats |

| Metal Details |             |
|---------------|-------------|
| Purity        | 18K         |
| Total Weight  | 0.920 grams |



Serial Number - LLR-9247

| Overall Diamond Details |              |
|-------------------------|--------------|
| Shape                   | Round        |
| Total Weight            | 0.680 carats |

| Metal Details |             |
|---------------|-------------|
| Purity        | 18K         |
| Total Weight  | 3.160 grams |



Serial Number - LR-12250

| Overall Diamond Details |              |
|-------------------------|--------------|
| Shape                   | Round        |
| Total Weight            | 0.140 carats |

| Metal Details |             |
|---------------|-------------|
| Purity        | 18K         |
| Total Weight  | 2.160 grams |





Serial Number - BM-04005

| Overall Diamond Details |              |
|-------------------------|--------------|
| Shape                   | Round        |
| Total Weight            | 0.560 carats |

| Metal Details |             |
|---------------|-------------|
| Purity        | 18K         |
| Total Weight  | 2.750 grams |



Serial Number - ER-6KE

| Overall Diamond Details |              |
|-------------------------|--------------|
| Shape                   | Round        |
| Total Weight            | 0.270 carats |

| Metal Details |             |
|---------------|-------------|
| Purity        | 18K         |
| Total Weight  | 2.140 grams |



Serial Number - ER-60136

| Overall Diamond Details |              |
|-------------------------|--------------|
| Shape                   | Round        |
| Total Weight            | 0.380 carats |

| Metal Details |             |
|---------------|-------------|
| Purity        | 18K         |
| Total Weight  | 2.500 grams |



Serial Number - PS-A54333E

| Overall Diamond Details |              |
|-------------------------|--------------|
| Shape                   | Round        |
| SYT Green               | 0.320 carats |
| Diamonds                | 0.520 carats |

| Metal Details |             |
|---------------|-------------|
| Purity        | 18K         |
| Total Weight  | 3.760 grams |



Serial Number - ER-5873B

| Overall Diamond Details |              |
|-------------------------|--------------|
| Shape                   | Round        |
| Total Weight            | 0.440 carats |

| Metal Details |             |
|---------------|-------------|
| Purity        | 18K         |
| Total Weight  | 2.460 grams |



Serial Number - ER-278

| Overall Diamond Details |              |
|-------------------------|--------------|
| Shape                   | Round        |
| Total Weight            | 0.690 carats |

| Metal Details |             |
|---------------|-------------|
| Purity        | 18K         |
| Total Weight  | 4.740 grams |





Serial Number - BM-04156

| Overall Diamond Details |              |
|-------------------------|--------------|
| Shape                   | Round        |
| Total Weight            | 0.160 carats |

| Metal Details |             |
|---------------|-------------|
| Purity        | 18K         |
| Total Weight  | 1.450 grams |



Serial Number - BM-09007

| Overall Diamond Details |              |
|-------------------------|--------------|
| Shape                   | Round        |
| Total Weight            | 0.400 carats |

| Metal Details |             |
|---------------|-------------|
| Purity        | 18K         |
| Total Weight  | 2.670 grams |



Serial Number - ER-2282

| Overall Diamond Details |              |
|-------------------------|--------------|
| Shape                   | Round        |
| Total Weight            | 0.620 carats |

| Metal Details |             |
|---------------|-------------|
| Purity        | 18K         |
| Total Weight  | 3.810 grams |



Serial Number - BM-04156

| Overall Diamond Details |              |
|-------------------------|--------------|
| Shape                   | Round        |
| Total Weight            | 0.740 carats |

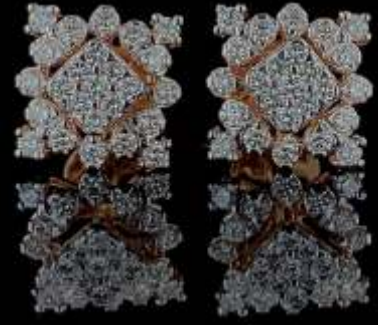
| Metal Details |             |
|---------------|-------------|
| Purity        | 18K         |
| Total Weight  | 4.730 grams |



Serial Number - ER-M13276

| Overall Diamond Details |              |
|-------------------------|--------------|
| Shape                   | Round        |
| Total Weight            | 0.150 carats |

| Metal Details |             |
|---------------|-------------|
| Purity        | 18K         |
| Total Weight  | 1.660 grams |



Serial Number - BM-04016

| Overall Diamond Details |              |
|-------------------------|--------------|
| Shape                   | Round        |
| Total Weight            | 0.840 carats |

| Metal Details |             |
|---------------|-------------|
| Purity        | 18K         |
| Total Weight  | 3.580 grams |



Serial Number - ER-295B

| Overall Diamond Details |              |
|-------------------------|--------------|
| Shape                   | Round        |
| Total Weight            | 0.380 carats |

| Metal Details |             |
|---------------|-------------|
| Purity        | 18K         |
| Total Weight  | 2.600 grams |



Serial Number - ER-A51502

| Overall Diamond Details |              |
|-------------------------|--------------|
| Shape                   | Round        |
| Total Weight            | 0.380 carats |

| Metal Details |             |
|---------------|-------------|
| Purity        | 18K         |
| Total Weight  | 2.801 grams |



Serial Number - ER-51590

| Overall Diamond Details |              |
|-------------------------|--------------|
| Shape                   | Round        |
| Total Weight            | 0.600 carats |

| Metal Details |             |
|---------------|-------------|
| Purity        | 18K         |
| Total Weight  | 2.910 grams |





Serial Number - LK-155

| Overall Diamond Details |              |
|-------------------------|--------------|
| Shape                   | Round        |
| Total Weight            | 1.280 carats |

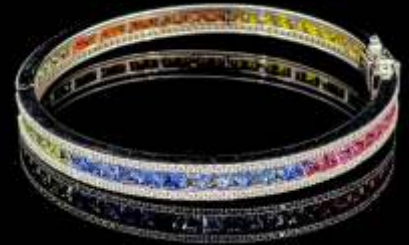
| Metal Details |              |
|---------------|--------------|
| Purity        | 18K          |
| Total Weight  | 12.270 grams |



Serial Number - LK-157

| Overall Diamond Details |              |
|-------------------------|--------------|
| Shape                   | Round        |
| Total Weight            | 1.290 carats |

| Metal Details |              |
|---------------|--------------|
| Purity        | 18K          |
| Total Weight  | 13.180 grams |



Serial Number - MSBG

| Overall Diamond Details |               |
|-------------------------|---------------|
| Shape                   | Round         |
| C/S                     | 16.760 carats |
| Diamond                 | 2.320 carats  |

| Metal Details |              |
|---------------|--------------|
| Purity        | 18K          |
| Total Weight  | 28.590 grams |



Serial Number - LK-155

| Overall Diamond Details |              |
|-------------------------|--------------|
| Shape                   | Round        |
| Total Weight            | 1.280 carats |

| Metal Details |              |
|---------------|--------------|
| Purity        | 18K          |
| Total Weight  | 12.270 grams |



Serial Number - LK-157

| Overall Diamond Details |              |
|-------------------------|--------------|
| Shape                   | Round        |
| Total Weight            | 1.290 carats |

| Metal Details |              |
|---------------|--------------|
| Purity        | 18K          |
| Total Weight  | 13.180 grams |



Serial Number - LK-160

| Overall Diamond Details |             |
|-------------------------|-------------|
| Shape                   | Round       |
| Total Weight            | 1.800carats |

| Metal Details |             |
|---------------|-------------|
| Purity        | 18K         |
| Total Weight  | 15.000grams |





Serial Number - CLK-201

| Overall Diamond Details |              |
|-------------------------|--------------|
| Shape                   | Round        |
| Total Weight            | 3.780 carats |

| Metal Details |              |
|---------------|--------------|
| Purity        | 22K          |
| Total Weight  | 26.160 grams |



Serial Number - LK-158

| Overall Diamond Details |              |
|-------------------------|--------------|
| Shape                   | Multi        |
| Total Weight            | 2.110 carats |

| Metal Details |              |
|---------------|--------------|
| Purity        | 18K          |
| Total Weight  | 13.330 grams |



Serial Number - LK-156

| Overall Diamond Details |              |
|-------------------------|--------------|
| Shape                   | Round        |
| Total Weight            | 1.340 carats |

| Metal Details |              |
|---------------|--------------|
| Purity        | 18K          |
| Total Weight  | 16.130 grams |







Serial Number - FLP-16370



Serial Number - FLP-15137

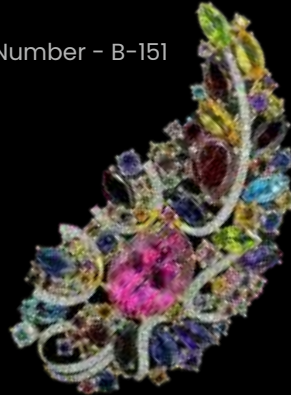


Serial Number - FLP-15123



Serial Number - B-33

Serial Number - B-151



Serial Number - B-54



Serial Number - FP-1140



Serial Number - NK-254



Serial Number - BK-142



Serial Number - BK-147



Serial Number - FLP-15137



Serial Number - B-72



Serial Number - G16811\_01



Serial Number - FLP-12385



Serial Number - ULR-6451



Serial Number - FLP-7253



Serial Number - NK-682



Serial Number - NK-683



ARHAM JEWEL

*Bespoke Jewellery*